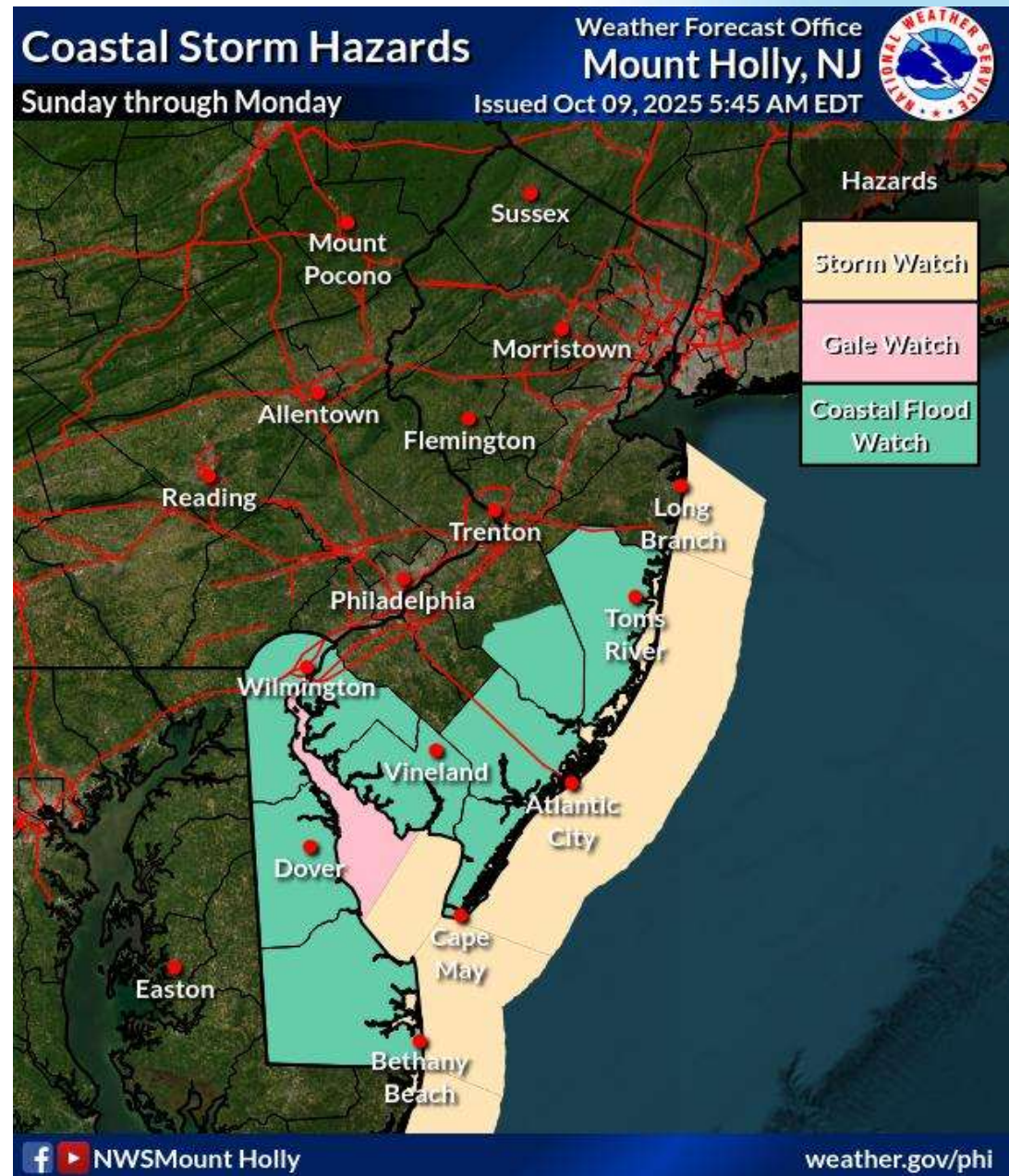


Significant Coastal Storm October 12-13, 2025

Decision Support Briefing # 2
As of: 6:30 AM October 9, 2025

What Has Changed?

- ✓ *Coastal Flood Watch issued for portions of New Jersey and Delaware.*
- ✓ *Storm Watch issued for the Atlantic coastal waters and lower Delaware Bay*





Key Messages for Strong Coastal Low

Issued: Thursday, October 9, 2025
3:00 AM EDT

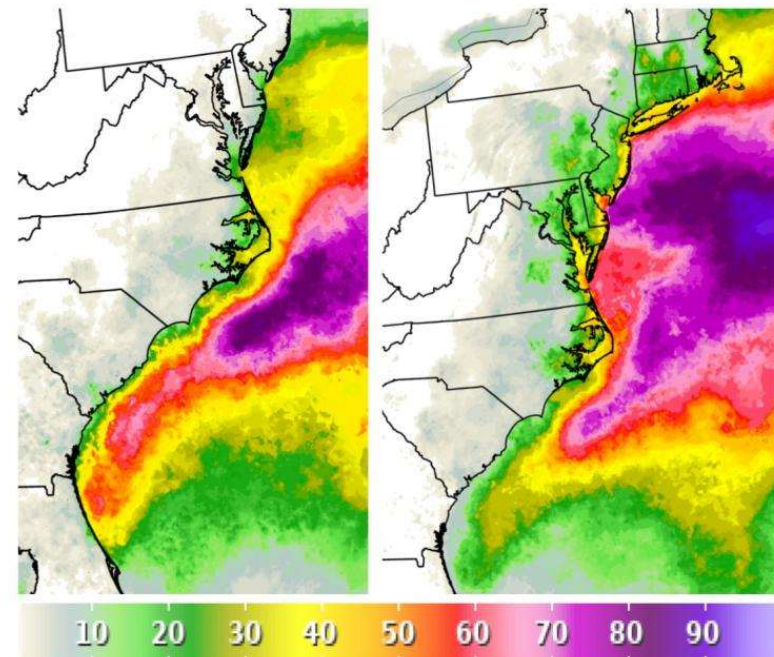
Coastal flooding, gusty winds, and heavy rain are expected along the U.S. East Coast

- Strong Coastal Low Will Develop Late This Week**
 A coastal low is expected to develop off the Carolinas late this week and strengthen this weekend. This strengthening storm may bring significant impacts to much of the U.S. East Coast through early next week.
- Potential for Significant Coastal Flooding**
 The combination of persistent, strong onshore winds, high surf, and high astronomical tides may lead to some East Coast communities experiencing significant coastal flooding impacts. Coastal residents are urged to heed their local National Weather Service forecasts and warnings and always follow guidance from local officials.
- Strong Rip Currents & Beach Erosion from High Surf**
 High surf is expected on many East Coast beaches, which will generate strong rip currents and potentially lead to some beach erosion.
- Strong Wind Gusts and Heavy Rain Along Coast**
 The storm is also likely to bring wind gusts in excess of 45 MPH and periods of heavy rain, primarily to areas near the coast. This may bring additional flooding from rainfall outside of the immediate coastal zone, as well as the potential for scattered power outages.

Chance of 45+ MPH Wind Gusts

Saturday

Sunday



Visit Eastern Region Coastal
Flood Display for more info
weather.gov/erh/coastalflood



National Oceanic and
Atmospheric Administration
U.S. Department of Commerce

For more information go to:





www.wpc.ncep.noaa.gov and www.weather.gov

Weather Prediction Center
College Park, Maryland





Main Points

Hazard	Impacts	Location	Timing
Coastal Flooding 	<p>Moderate to major tidal flooding possible. Potential for widespread significant flooding and beach erosion. Damage to some structures along the coast possible.</p>	<p>Coastal areas of New Jersey and Delaware, including Delaware Bay.</p>	<p>High tides Sunday through Monday.</p>
Marine 	<p>Northeast gale and storm force winds (gusts near 45-55 knots). Wave heights on the ocean near 15-20 feet. Very dangerous conditions possible.</p>	<p>Atlantic coastal waters of New Jersey and Delaware, and Delaware Bay.</p>	<p>Saturday night through Monday night.</p>
Wind 	<p>Strong to damaging winds possible. Northeast wind gusts near 60 mph possible along the New Jersey and Delaware coasts. Wind gusts 30-50 mph possible inland.</p>	<p>Coastal counties of New Jersey and Delaware.</p>	<p>Sunday through Monday.</p>
Heavy Rain/ Flooding 	<p>Rainfall amounts may be excessive enough to result in areas of flooding, especially in urban areas.</p>	<p>Especially along and south/east of the I-95 corridor.</p>	<p>Sunday through Monday.</p>

Coastal Flooding Potential

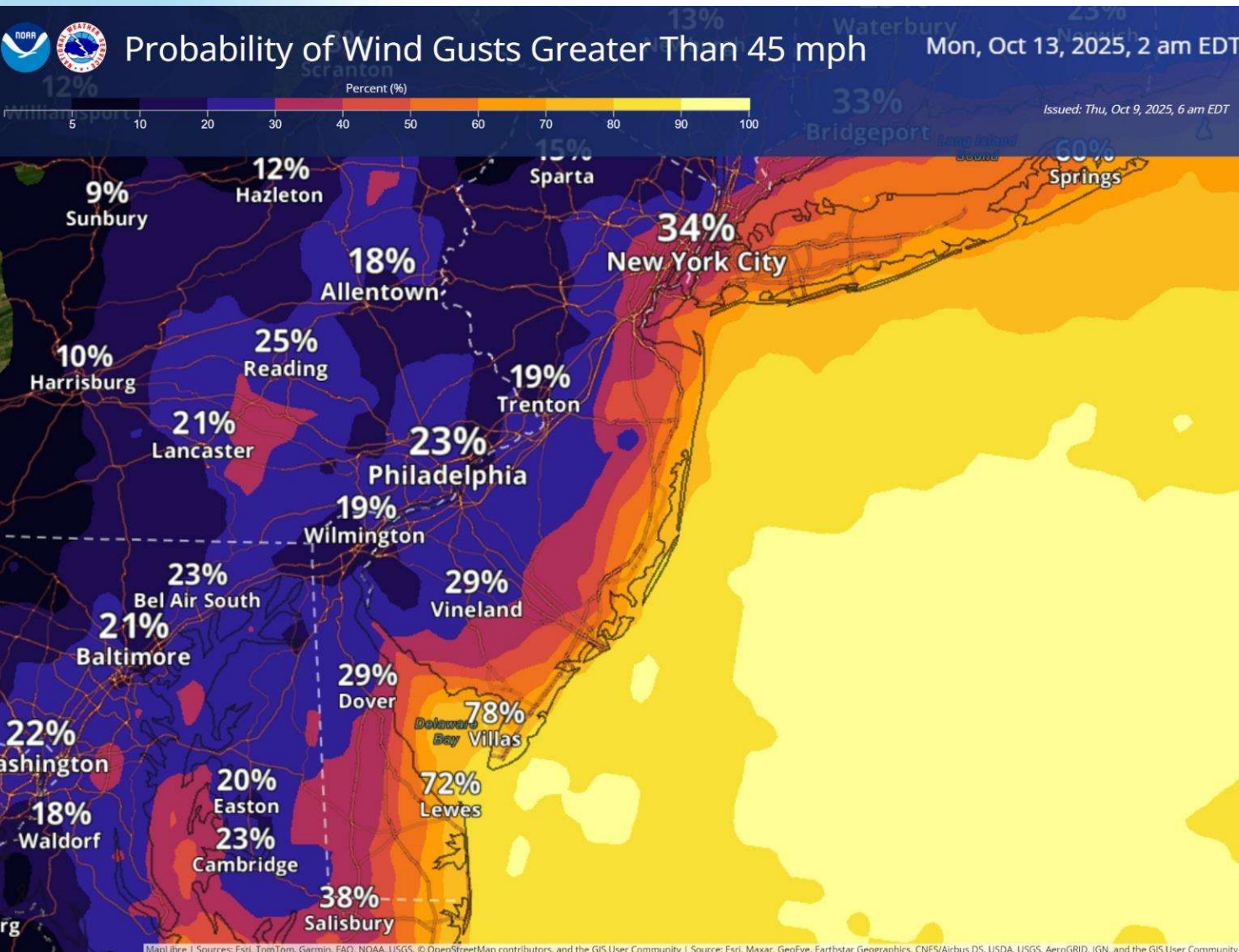
Prepare for Coastal Flooding

- ✓ Elevate your belongings off of the ground
- ✓ Move your car to higher ground
- ✓ Have an evacuation plan



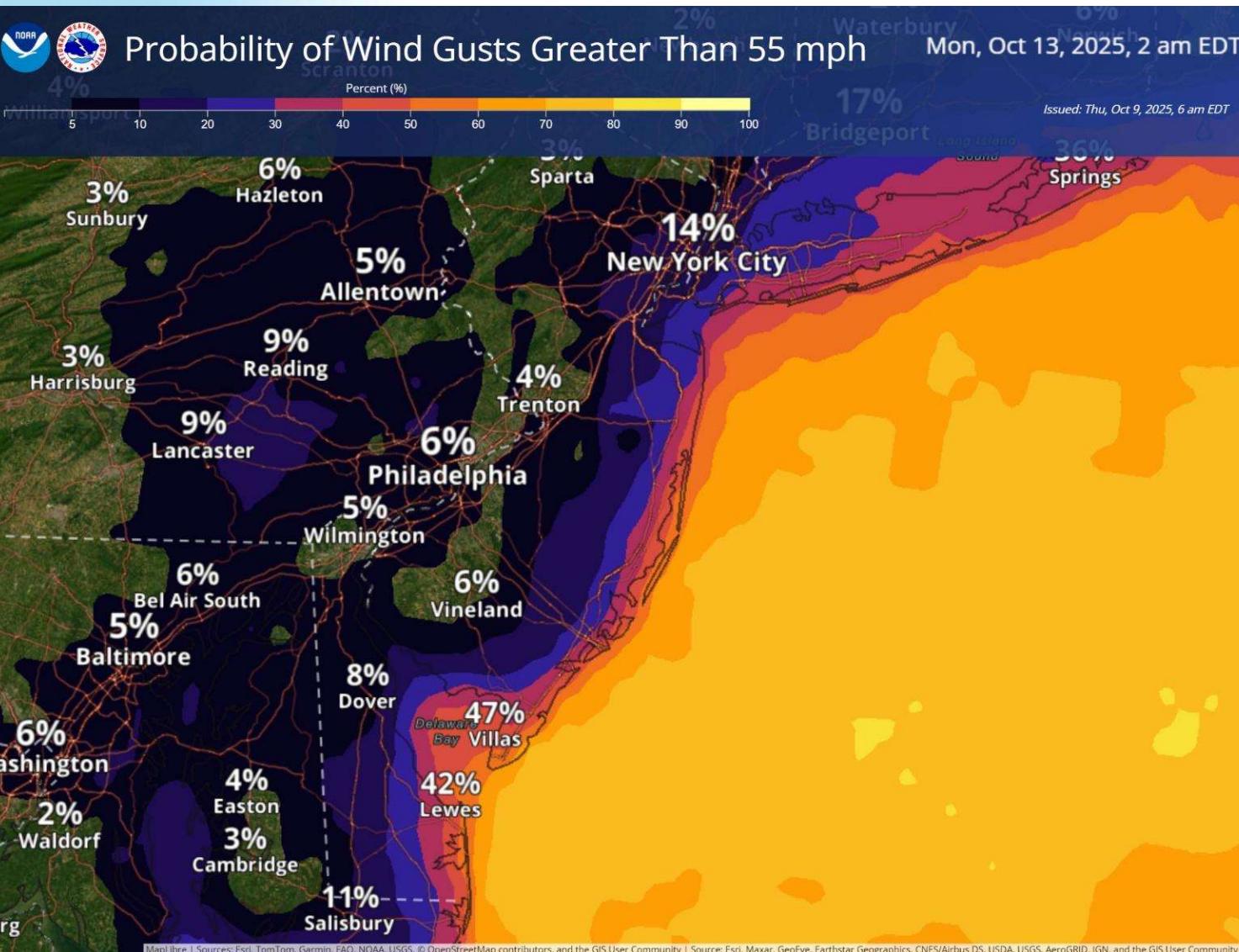
- ✓ Moderate to Major coastal flooding possible Sunday through Monday.
- ✓ *The actual magnitude of the coastal flooding will depend on the track/intensity of the storm, along with how strong the onshore winds become.*
- ✓ This time frame is beyond our current tides forecast, however preliminary guidance suggests this could be a significant to severe event.

Wind Gust Probabilities Sunday and Monday



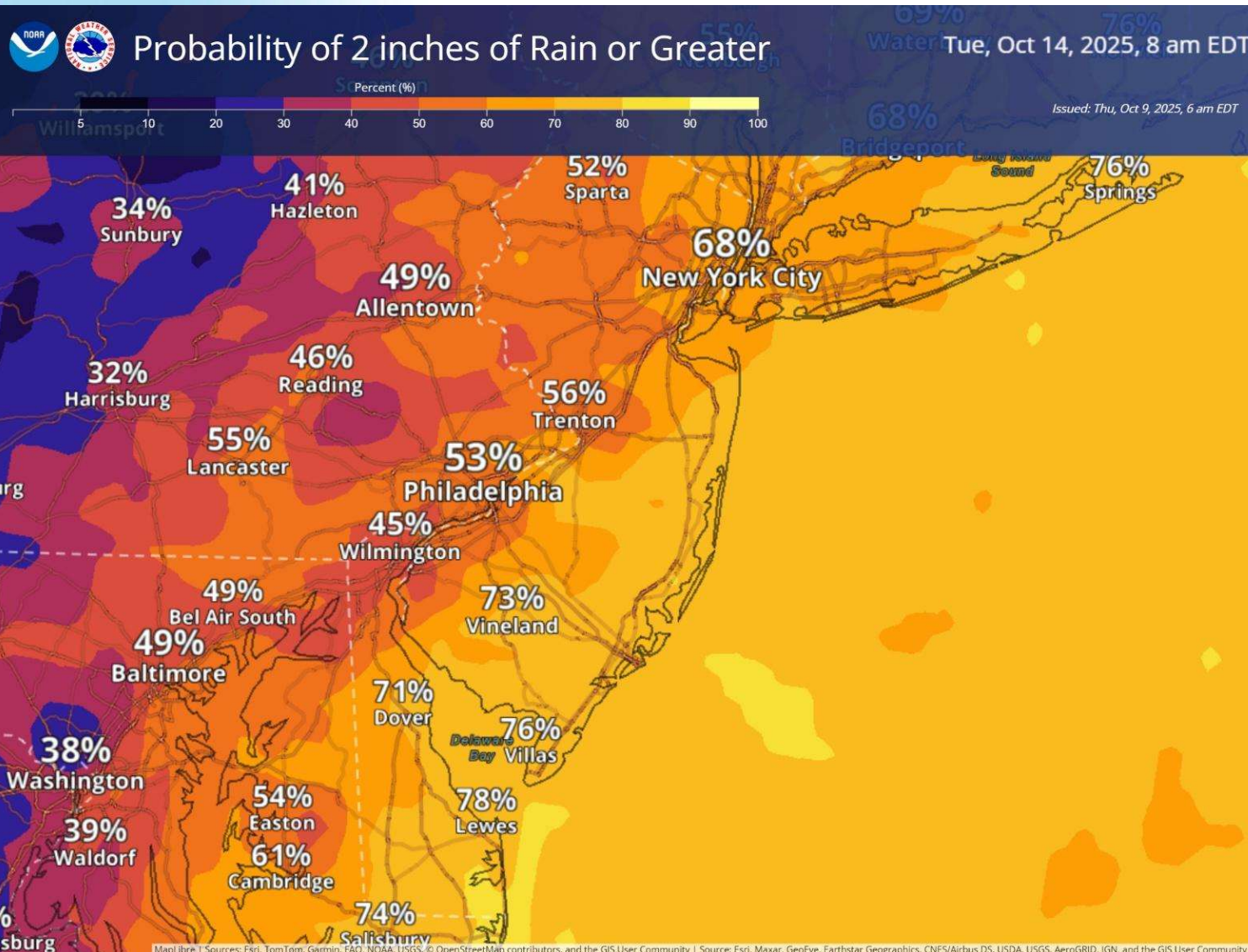
- ✓ **Probability of wind gusts greater than 45 mph ranges from 50-80% along the Atlantic coast.**
- ✓ **Actual magnitude of the winds will depend on the storm track and intensity.**

Wind Gust Probabilities Sunday and Monday



- ✓ **Probability of wind gusts greater than 55 mph ranges from 40-60% along the immediate Atlantic coast.**
- ✓ **Actual magnitude of the winds will depend on the storm track and intensity.**

Heavy Rain/Flooding Possible Sunday and Monday



- ✓ **Probability of 2 or more inches of rain.**
- ✓ Rain from the coastal storm could be heavy at times.
- ✓ **The actual amounts will depend on the track of the storm.**
- ✓ However, there is some risk for flooding.

Event Summary

- ✓ **Significant impacts from a strong coastal storm appear increasingly likely for our area Sunday and Monday.** The severity of impacts to our area will depend on the exact track/intensity of the storm, which remains uncertain. **The greatest impacts are most likely for marine and coastal areas, which includes significant coastal flooding, strong to damaging winds, significant waves, and beach erosion.**
- ✓ **Moderate to major coastal flooding possible** along the NJ and DE coasts, and Delaware Bay with the high tides Sunday through Monday.
- ✓ **Strong to damaging winds possible** along the NJ and DE coasts and even somewhat inland.
- ✓ **Storm force winds and seas up to 20 feet possible** on the ocean, which would result in very dangerous conditions.
- ✓ Areas of heavy rain could result in **some flooding**.

Contact and Next Briefing Information



Next Briefing

*When: By 5 PM,
October 9, 2025*

Briefing Webpage:

www.weather.gov/media/phi/current_briefing.pdf



Web:

www.weather.gov/phi



Phone (public):

(609) 261-6600



Facebook:

NWSMountHolly



Twitter:

@NWS_MountHolly

Disclaimer: The information contained within this briefing is time-sensitive, do not use after the next briefing package issuance.